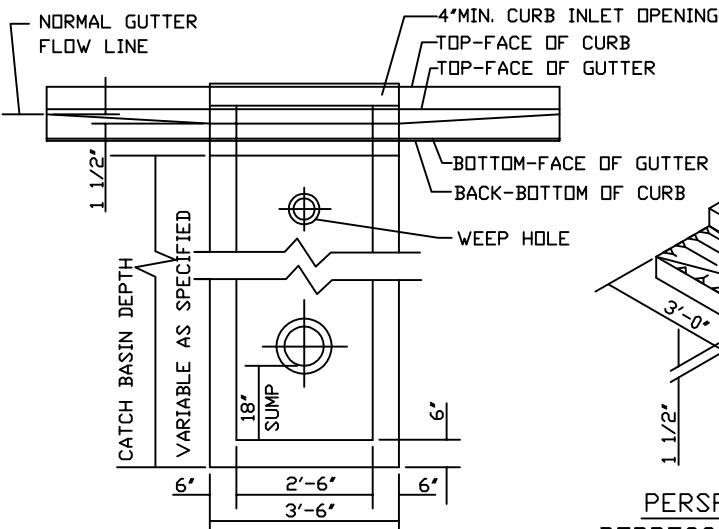
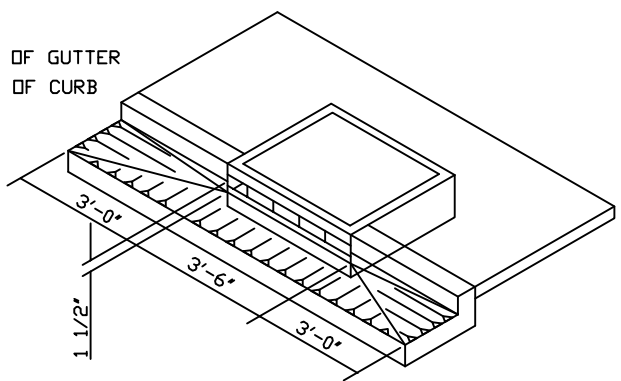


PLAN VIEW

SECTION A-A



FRONT VIEW



PERSPECTIVE VIEW SHOWING DEPRESSED GUTTER AT CURB INLET

NOTES:

- 1) ALL FABRICATED METAL PARTS SHALL BE HOT-DIPPED GALVANIZED AFTER FABRICATION
- 2) CONCRETE SHALL ATTAIN A MIN. COMPRESSIVE STRENGTH OF 3000 P.S.I. IN 28 DAYS
- 3) FOR STEEP GRADES USE STD. PRECAST INLET WITH 4'-0" OPENING OR TWO 2'-6" OPENING INLETS
- 4) RECAST CURB INLET IS PATTERNED AFTER WALT'S CONCRETE SPRINGFIELD, DR. CONCRETE CURB INLET PAT. NO. 4000953
- 5) INSTALL STEPS WHEN DISTANCE FROM TOP OF GRATE TO FLOWLINE OF PIPE IS GREATER THAN 3.5 FEET



TITLE: CURB INLET CATCHBASIN		SHEET: 1 OF 1
FILE NAME: SWM-0004	DRAWN BY: WDK	REV. DATE: 10/11/94
SCALE: NOTE TO SCALE	DATE: 8/4/94	CHECKED BY: MDW