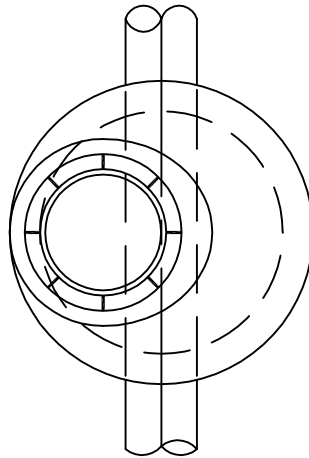
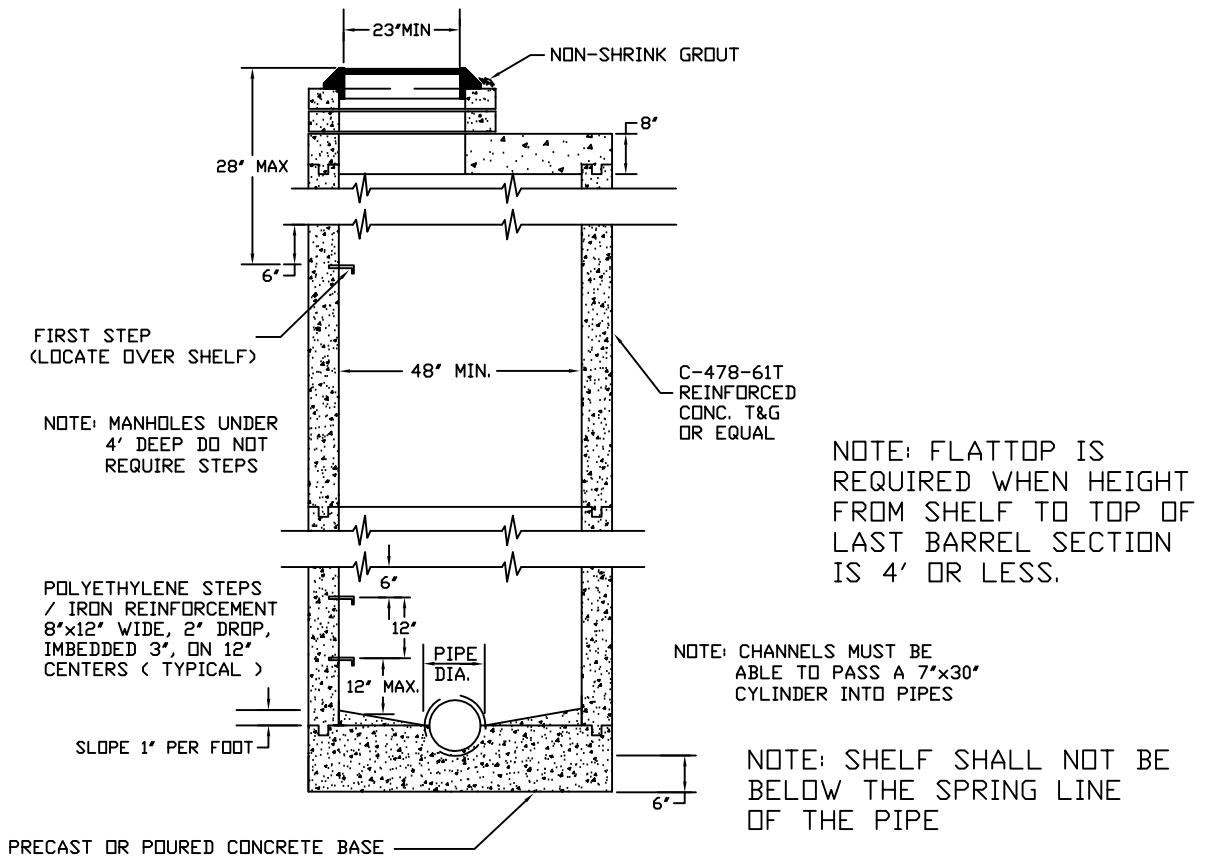


PROVIDE STD. RUBBER RING JOINT WITHIN 1" - 6" OF OUTSIDE FACE OF MANHOLE WALL



NOTE: MANHOLE LID TO BE 6" ABOVE FINISH GRADE IN EASMENTS
BARREL SECTION IS 3'

NOTE: REQUIRE CONCENTRIC LID WHEN HEIGHT FROM SHELF TO TOP OF LAST BARREL SECTION IS 3' OR LESS.



TYPICAL FLATTOP MANHOLE
6" TO 30" PIPE



TITLE: FLAT-TOP MANHOLE		SHEET: 1 OF 1
FILE NAME: SWM-0009	DRAWN BY: WDK	REV. DATE: 06/28/2001
SCALE: NOT TO SCALE	DATE: 06/28/2001	CHECKED BY: MN