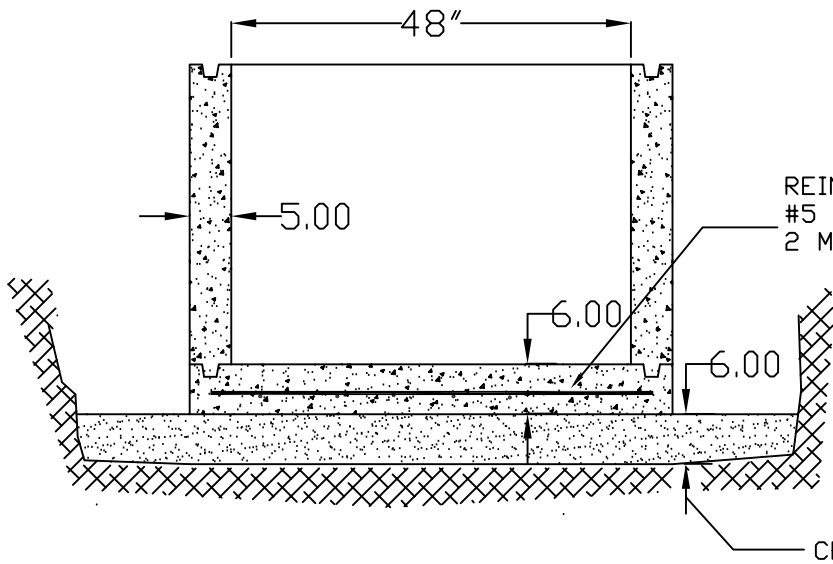


NOTE:
 CONCRETE TO EXTEND 12"
 OUTSIDE OF MH WALL AND
 6" ABOVE THE BOTTOM OF
 THE BASE SECTION

POURED IN PLACE MANHOLE BASE



REINFORCING SHALL BE
 #5 @ 12" O.C. E.W. OR
 2 MATS OF 6 X 6 X 10 GA.

CRUSHED ROCK BASE

PRECAST MANHOLE BASE



TITLE: PRECAST MANHOLE BASE		SHEET: 1 OF 1
FILE NAME: SWM-0017	DRAWN BY: WDK	REV. DATE: 10/11/94
SCALE: NOT TO SCALE	DATE: 10/6/94	CHECKED BY: MDW